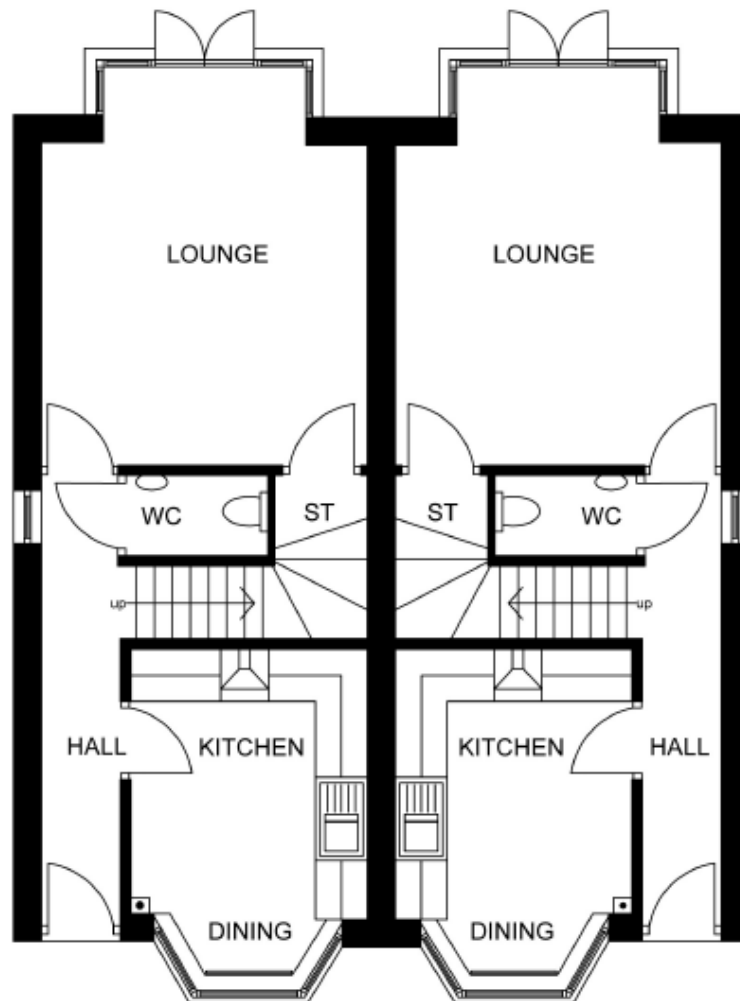


3 Bedroom House



Parkes Homes Ltd



Ground Floor

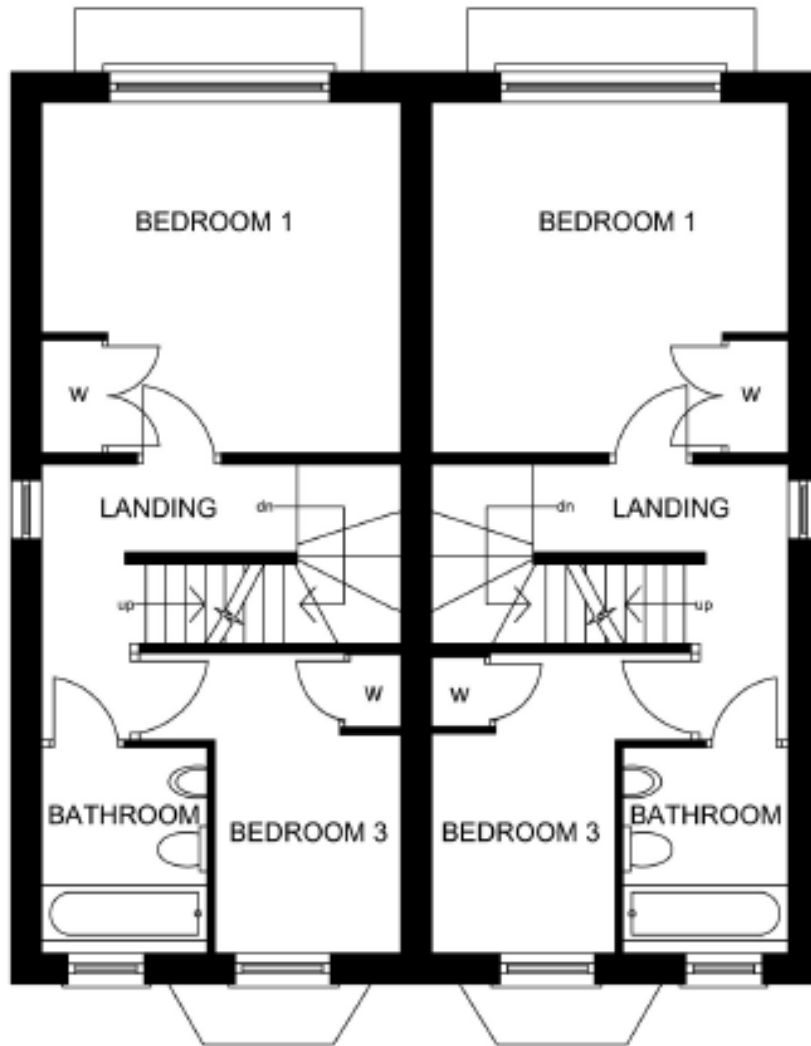
Room	Metres	Feet/Inches
Kitchen/Dining Room	2650 x 3650	8' 8" x 12' 0"
Downstairs W.C.	914 x 1700	3' 0" x 5' 7"
Lounge	3720 x 4500	12' 2" x 14' 9"
Bedroom 1	3720 x 3770	12' 2" x 12' 4"
Bedroom 3	1820 x 3070	6' 0" x 10' 1"
Bathroom	1770 x 2120	5' 10" x 7' 0"
Bedroom 2 (2 nd Floor)	3720 x 2800	12' 2" x 9' 2"
Ensuite	3020 x 1600	9' 11" x 5' 3"

The dimensions shown are approximate and the precise measurements may vary. Please ask to see the drawings relative to the specific plot. All room dimensions are to a +/-50mm (2") tolerance. Kitchen layouts are indicative only. Please consult the Sales Adviser on-site for specific kitchen layouts. This information is for guidance only and does not form part of any contract or constitute a warranty.

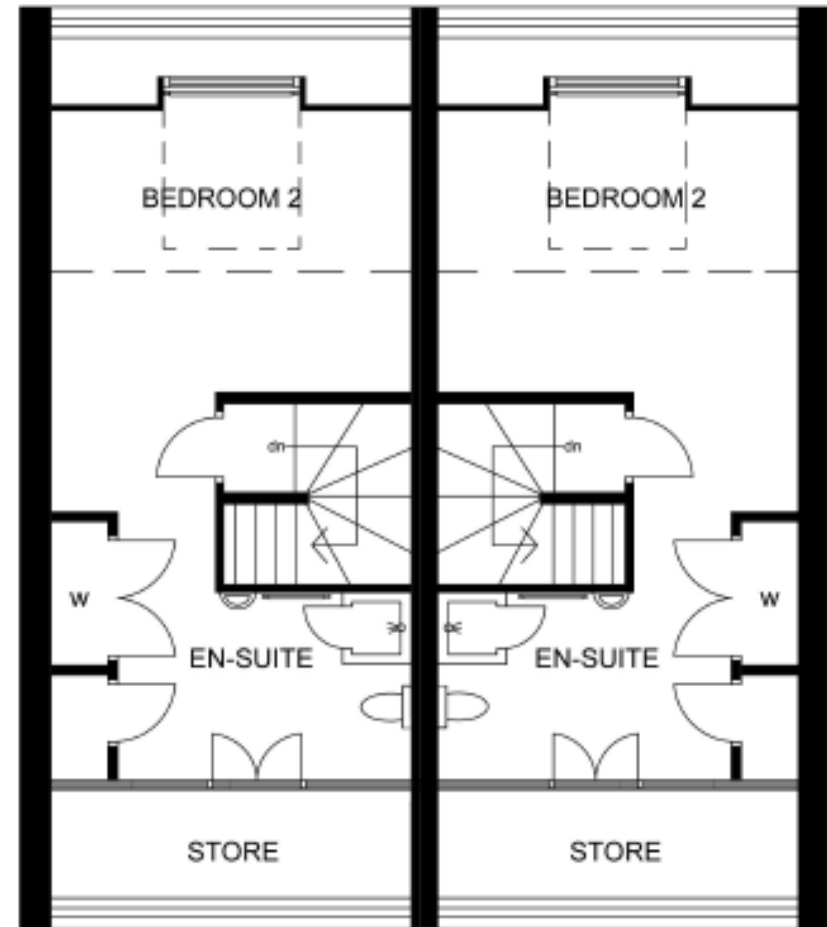
3 Bedroom House



Parkes Homes Ltd



First Floor



Second Floor

The dimensions shown are approximate and the precise measurements may vary. Please ask to see the drawings relative to the specific plot. All room dimensions are to a +50mm (2") tolerance. Kitchen layouts are indicative only. Please consult the Sales Adviser on-site for specific kitchen layouts. This information is for guidance only and does not form part of any contract or constitute a warranty.